



▶ FEATURES AND BENEFITS
TECHNILITE
EXTRUSION 1



▶ SPECIFICATIONS..... 2
ADVANTAGES..... 2



▶ APPLICATIONS..... 2
CUT SHEETS 2

Extrusions LCD Surround

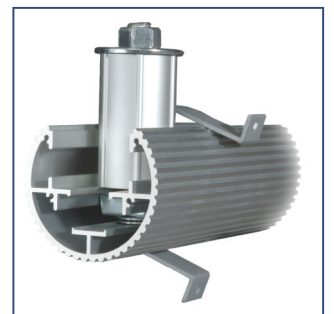
TECHNICAL SPECIFICATONS
INSTRUCTION SHEET
AND USER GUIDE

Lightweight and easy to install, our LCD Surround Systems work seamlessly with the TechniMount sign hanging system. Easily build kiosks and self service stands with our convenient extrusion systems.



Features and Benefits

- Strong and durable extruded aluminum adds functionality and security to your media displays and menuboard, it can also be used in conjunction with the TechniMount sign hanging system.
- Our surround system can be constructed from a variety of frames making your kiosks lockable and vandal resistant as well as weather resistant.



The TechniMount adjustable sign hanging system makes media placement quick and easy!

TechniLite Extrusion Systems

At TechniLite Systems we have made building your own sign or sign surround an easy thing! Most of our extrusions use a simple corner key that will give you a perfect corner every time. Our stock 10' long aluminum extrusions are available in powder coated black or clear anodized aluminum, and we offer custom ordered colours as well. You can order from our stock and be building your project in as little time as it takes to ship to you. All of our extrusion systems are designed to work with our TechniLite and TechniTwin T5 lighting systems. We can also adapt some sign systems for our LED lighting system too! Our Technical Sales team can help you determine the right sign system for your application.



- ▶ SPECIFICATIONS
- ▶ ADVANTAGES
- ▶ APPLICATIONS
- ▶ CUT SHEET

LCD Surround

SPECIFICATIONS

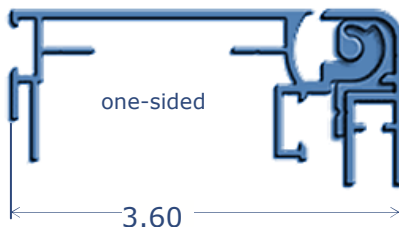
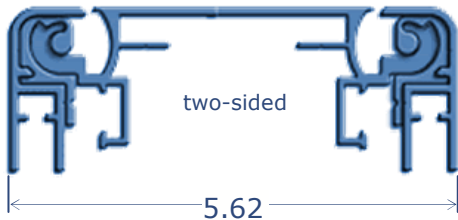
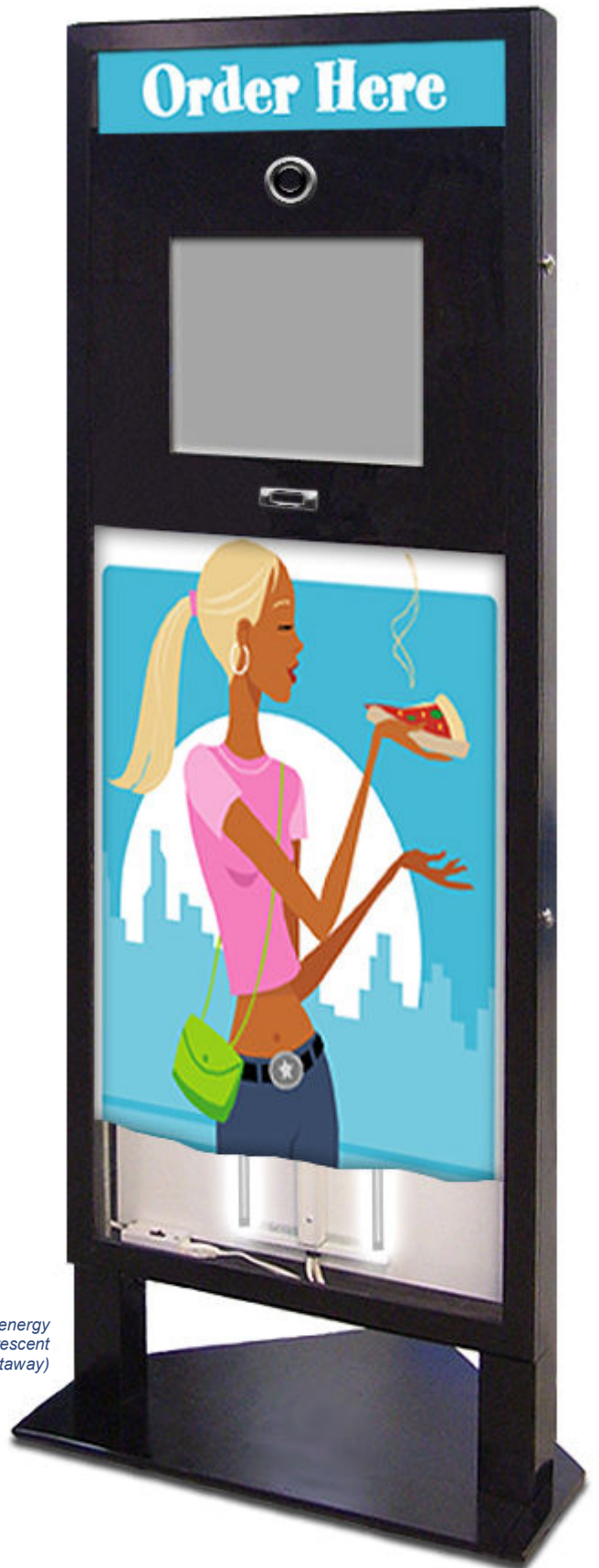
- constructed from extruded aluminum; available in lengths up to 10' long
- solid and strong construction
- anodized aluminum or black powder coat finish

ADVANTAGES

- available in different frame styles; some styles are lockable offering vandal and weather resistance
- strong structural properties
- engineered for heavy loads
- sleek modern lines compliment any media

APPLICATIONS

- restaurant menuboard signage
- kiosks and standing interactive displays
- overhead displays and advertising
- trade shows and exhibits
- commercial and retail spaces
- cash wraps
- bulk head installation replacements



Illuminate your media with the energy efficient TechniTwin T5 fluorescent lighting system (shown in cutaway) TechniShow sign frame shown.