



► FEATURES AND BENEFITS
ILLUMINATE
YOUR MEDIA!..... 1



► SPECIFICATIONS
ADVANTAGES
APPLICATIONS..... 2



Media Solutions TechniKiosk

Lightweight and easy to install, easily build kiosks and self service stands with our convenient extrusion and lighting systems.

Features and Benefits



Kiosks can be designed in a variety of sizes, shapes and number of sides

- Strong and durable extruded aluminum adds functionality and security to your media displays, it can also be used in conjunction with our many lighting systems.
- Our kiosk system can be constructed from a variety of frames making your kiosks lockable

Illuminating your media is easy!

Lightweight and easy to install, linkable TechniLite and TechniTwin fixtures feature an electronic ballast and T5 lamps which saves up to 30% over conventional fluorescent fixtures.



Use our "TechniLite" or "TechniTwin" T5 lighting systems to complement and illuminate your kiosk designs.

Our electronic ballasts are:

- Integral to each fixture and designed to match each lamp, and feature end-of-life shutdown.
- Available in indoor or outdoor use and in high efficiency and high output formats.

Our fixtures are:

- Thin profiled and easily allow signs to meet all ADA and "barrier free" sign requirements. All of our fixtures are designed and manufactured in Canada to North American standards.



Frame your large format media and advertising in our easy to use extrusions, available in ready to use kits. (see reverse for details)



- ▶ SPECIFICATIONS
- ▶ ADVANTAGES
- ▶ APPLICATIONS
- ▶ CUT SHEET

TechniKiosk

SPECIFICATIONS

- constructed from extruded aluminum; available in lengths up to 10' long
- solid and strong construction
- anodized aluminum or black powder coat finish

ADVANTAGES

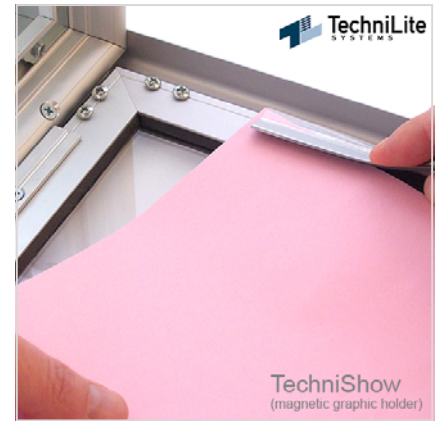
- available in different frame styles; some styles are lockable offering vandal and weather resistance
- strong structural properties
- engineered for heavy loads
- sleek modern lines compliment any media

EXTRUSION KITS

At TechniLite Systems we've made building your own sign an easy thing! Most of our extrusions use a simple corner key that will give you a perfect corner every time. Our stock 10' long extrusions are available in powder coated black or clear anodized aluminum. You can order from our stock and be building your project in as little time as it takes to ship it to you. Our Technical Sales team can help you determine the right sign system to suit your needs. You may also want to view our TechniLite and TechniTwin lighting systems to complete your project.

APPLICATIONS

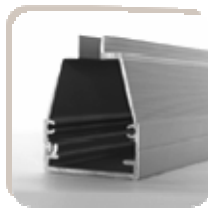
- kiosks and standing interactive displays
- overhead displays and advertising
- trade shows and exhibits
- commercial and retail spaces
- cash wraps
- bulk head installation replacements



Graphic changes are made easy with our magnetic graphic holder as seen above on the TechniShow frame



TechniOne Snap
one / two sided



TechniOne Mag
one / two sided



TechniEdge F
one / two sided



TechniEdge LED
one / two sided



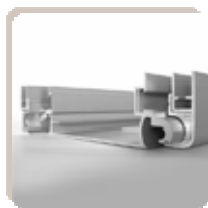
TechniMedia
non-lit / one



TechniShow
non-lit / one / two sided



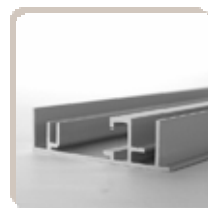
TechniShow
lit / one sided



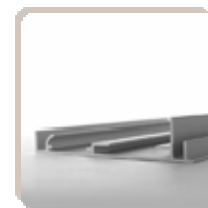
TechniShow
lit / two sided



TechniOne Snap
lit / one sided



TechniTrim
lit / one sided



TechnoFrame
lit / one sided