



► FEATURES AND BENEFITS
T5 LIGHTING
ADVANTAGE..... 1



► SPECIFICATIONS
ADVANTAGES
APPLICATIONS..... 2
CUT SHEETS 3



► INSTALLATION
LAMP REPLACEMENT
PARTS AND SERVICE.. 4

T5 lighting TechniLite

TECHNICAL SPECIFICATONS
INSTRUCTION SHEET
AND USER GUIDE

Lightweight and easy to install, linkable TechniLite fixtures feature an electronic ballast and T5 lamps which saves up to 30% over conventional fluorescent fixtures.

Features and Benefits

Ballasts:

- Designed to match each lamp, our electronic ballasts are integral to each fixture.
- Available in indoor or outdoor use.
- Available in high efficiency and high output.
- No extra wiring required!

Fixtures:

- available in hardwire or 3 wire grounded
- Made from durable aluminum extrusion.
- Available in anodized aluminum, white and custom colours.
- Linkable daisy chaining connectivity.
- Customizable.
- Lens and rocker switch available.
- Designed and manufactured in Canada to North American standards.

Lamps:

- Energy efficient super-thin fluorescent lighting with the highest lumen output per watt of any fluorescent lamp.
- T5 lamps provide better maintained light output compared to other fluorescent lamps.
- 5/8" diameter T5 lamp is available from all North American manufacturers providing fast and easy replacement.
- Long lamp life with starts as low as -15 degrees C.
- Having a high CRI, our lamps are available in 830ww, 835w, 841cw and 865 daylight colours.



The T5 Lighting Advantage

T5 fluorescent lamps are thinner, more efficient and offer a higher intensity of light output than T8 or T12 lamps and the narrower profile means that the lamps provide designers with better optical control and better energy efficiency. In addition, the lamps are designed to provide maximum light output at an ambient temperature of 95° F rather than the 77° F design point for most other lamps. Those characteristics allow the use of the lamps in more compact fixtures and signs than would otherwise be possible. T5s are often applied in low-profile signs and low-profile light fixtures, such as those used for cove lighting and illuminating display cases. Indirect and indirect/direct fixtures also often feature T5 lamps—the thinness and high intensity of the lamps enable designers to place fixtures farther apart

than is possible with T8 lamps, as well as allowing for thinner signs. T5 lamps offer better lumen-maintenance performance than T8 lamps. The T5 lamps retain about 95 percent of their output after 40 percent of their rated life, compared with less than 90 percent for T8 lamps. The smaller size is an advantage at the end of lamp life as well, since T5s contain less mercury and less glass than T8 lamps.



- ▶ SPECIFICATIONS
- ADVANTAGES
- APPLICATIONS

Specifications TechniLite

SPECIFICATIONS

Fixture Type	T5 – Straight – Avg. nominal lengths (inches) 7, 10, 13, 22, 23, 35, 47, 59 for both standard and high output
Number of Lamps	1 or 2 lamps (on a single extrusion)
Line Voltage	12, 120, 220/240 and 347 V
Power Factor	Normal
Sound Rating	< Class A noise level
Starting Temperature	meets lamp rating
High Frequency Operation	> 25 KHz
Input Frequency	50/60 Hz
Transient Protection	yes
End of Life Protection	yes
EMI filter /	
RFI Noise Suppression	Optionally available
Thermal Protection	Designed in circuit

- Variety of sizes ranging from 7" - 5' fits in most display cabinets, saving you space and money
- Available corded or hardwire; great for any industrial or commercial application
- Ease of installation, saving you time and money
- Peace of mind, our 1.800.730.5853 toll free help and info line provides instant site to manufacturer help, saving you time and money

APPLICATIONS

- under cabinet lighting
- ceiling lighting—valance lighting
- cash wraps
- trade shows and exhibits
- commercial spaces
- wall wash
- display lighting

ADVANTAGES

- Electronic technology
- Chip controlled circuit
- End of lamp life circuit protection
- UL and cUL listed as a component and combined with our fixtures
- 100% of ballasts tested for acceptable parameter range / input amps/ lamp amps and frequency and 10 starts
- Ballast life 100,000 hours
- 2 year ballast warranty (entire fixture replaced)
- Cool run, long life, electronic ballast and T5 lamps save you up to 30% over conventional fluorescent, lowering your maintenance costs
- Design build application - suitable for a variety of applications
- Available in 1 or 2 lamp models providing easy layout
- Daisy chain linking



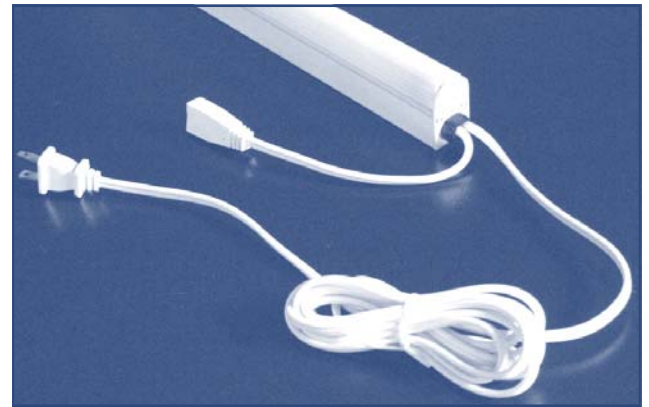


▶ CUT SHEET
WATTAGES
HERTZ
AMPS

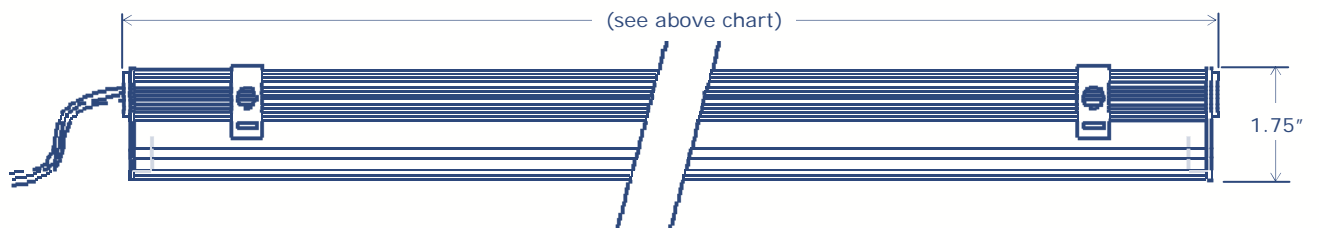
Specifications TechniLite

CUT SHEET

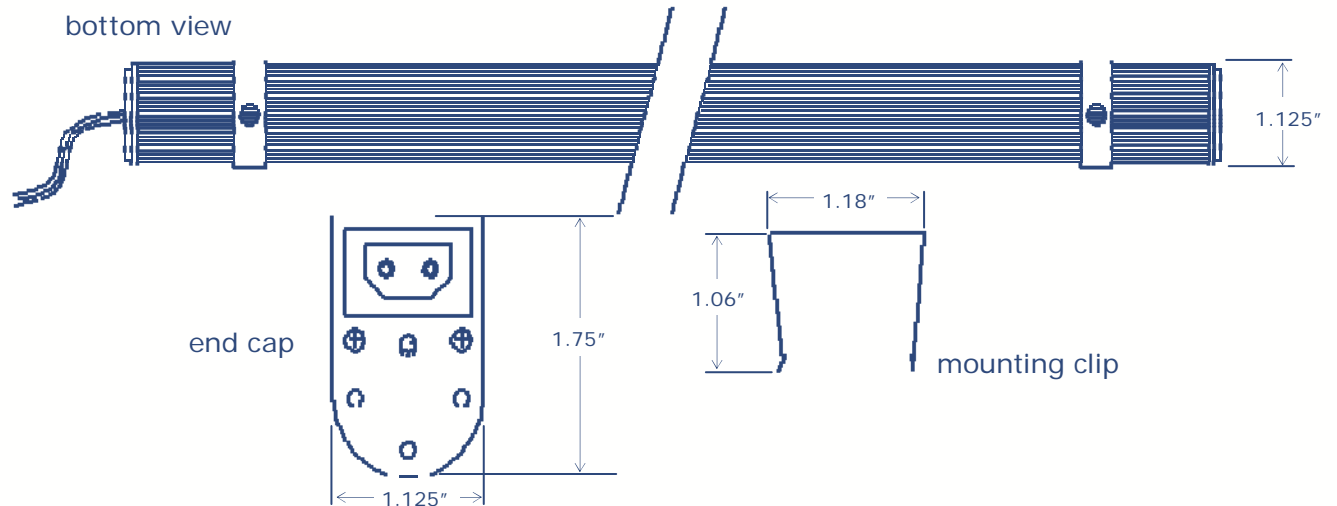
Wattage	amps (hertz 60 Hz or 50 Hz)				length
	12v	120v	220v	347v	
4w	0.33	0.10	-	-	7.00"
6w	0.50	0.13	-	-	9.75"
8w	0.67	0.15	-	-	12.75"
13w	1.08	0.23	-	-	21.75"
14w	1.16	0.25	0.12	.092	23.00"
21w	1.75	0.34	0.13	.146	34.63"
28w	2.33	0.47	0.15	.151	46.63"
35w	-	0.52	0.24	.169	58.38"
High output:					
24w	-	0.66	0.16	.165	23.00"
39w	-	1.10	0.26	.234	34.63"
54w	-	1.55	0.37	.320	46.63"
80w	-	2.40	0.65	.470	58.38"



side view



bottom view





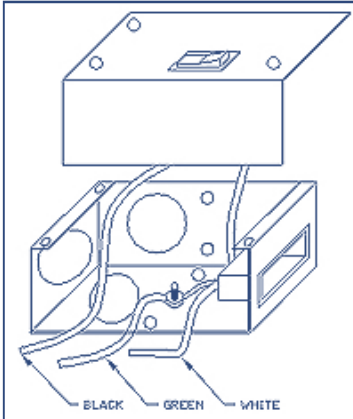
► INSTALLATION INSTRUCTIONS
LAMP REPLACEMENT
PARTS AND SERVICE

Use and Care TechniLite

INSTALLATION

Tools required: measuring tape, pencil, level, electric drill with 1/8" bit & counter sink, #1 Phillips screwdriver
note: If you are installing into plaster or drywall then you will need a 3/16" drill bit and minimum 2 rawl plugs for #6 wood screws.

1. Locate and mark ends of desired location on wall or ceiling.
2. Install the mounting clips by using a #6 screw 1" to 6" from each end marked on the scribed line. If your fixture is a 35w you will require a 3rd clip centred between end marks. Note: If surface is hardwood or metal you will need to pre-drill with 1/8" drill bit and counter-sink to allow room for underside of flathead screw.
3. Make sure power is turned off.



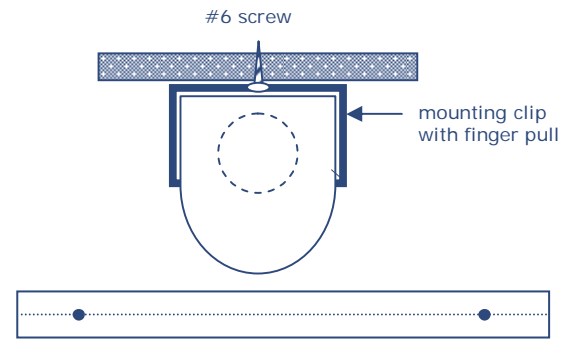
2. Remove lens by squeezing and pulling from one end to the other end. Remove lamp by rotating 90°.
3. Attach power cords if applicable.
4. Insert fixture into spring clips bottom first. (you will hear the snap action as the springs grab the fixture)
Note: Be sure to place the fixture in line with end marks, and location of power in and switch.

7. Replace lamp by rotating 90°. To replace lens, place lens flush against one end of fixture. Begin applying pressure at one end and continue applying pressure horizontally along fixtures until lens is snapped in completely.
8. Plug cord into wall receptacle.
7. Turn power on.
8. To remove fixture simply unsnap the spring clip with your finger or screwdriver, and pull out.
- 9.

LAMP REPLACEMENT

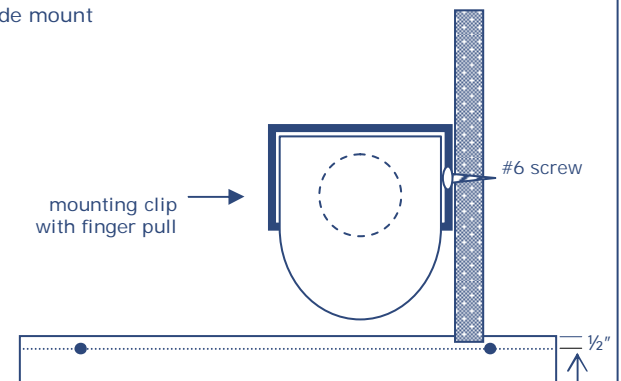
Ensure power is off, and then remove lamp by rotating it 90°, unlocking it from the fixture. Replace lamp with same wattage, and lock into place by rotating the lamp 90°.

back mount



For **back mount**, locate centre of back and scribe a mid-point line between end marks. Note the shape of the clip and ensure that finger pull is located on the

side mount



For **side mount** locate back of unit and measure down 1/2" and scribe line between the marks. Note the shape of the clip and ensure that finger pull is located on the most

PARTS AND SERVICE

We pride ourselves in our commitment to quality and reliability in all of our products, and all our TechniLite fixtures are warranted to be free of defect in workmanship.

Ballasts are not designed to be replaceable, replacement of whole fixture is required. Replacement lamps are readily available and can be ordered directly from TechniLite Systems by calling 1.800.730.5853.