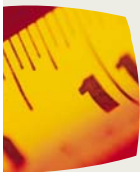




▶ FEATURES AND BENEFITS
ADA / BARRIER- FREE
COMPLIANCY 1



▶ SPECIFICATIONS
ADVANT AGES
APPLICATIONS2
CUT SHEETS3



▶ INSTALLATION
LAMP REPLACEMENT
PARTS AND SERVICE4

Edge Lit Signage

TechniOne Mag

TECHNICAL SPECIFICATONS
INSTRUCTION SHEET
AND USER GUIDE

Our edge lit technology drives this super-thin sign incorporating great illumination with superior versatility.

Features and Benefits

- Designed with clean and simple lines, this sign does not have any visible screws!
- Signs can be butt against each other or flush mounted, with no additional space required.
- Face material is removable with a simple suction cup allowing easy graphic changes.
- The slim profile of 3.5" meets all ADA and "barrier free" building codes, reducing the possibility of injury.
- Using TechniLite light fixtures allows a slim profile with minimal hot spots or striping, and our long life cool running T5 lamps and electronic ballast will save up to 30% more energy than conventional fluorescent systems, while providing a brighter sign.
- Also available lit with LEDs.



The Edge-lit Advantage

Incorporating edge lighting with new types of light diffusing acrylic is a recent technological innovation in the trend of ultra-slim illuminated signage. An alternative to the standard backlit sign (which requires the use of deep sign cabinets to house the lamp fixtures and electronics) edge-lit signage minimizes heat build-up and surface hot spots. Illuminating signs from the edge—with a single fluorescent lamp enables the construction of significantly slimmer and more versatile signs that are barrier-free and easier to install. By moving away from the deep sign cabinets of backlit signage, TechniLite has incorporated lighting within the framed edge of the acrylic sheet to construct ultra slim, illuminated signage that offers improved flexibility. The flexibility of ultra-slim, edge-lit signage greatly facilitates its handling, allowing its graphic panel to be changed both quickly and easily. The benefits of this become clear when applied to high-traffic areas with limited space. Advertising displays are able to maintain extra-bright messaging, and their etched acrylic graphic panels can be swapped at a low expense.

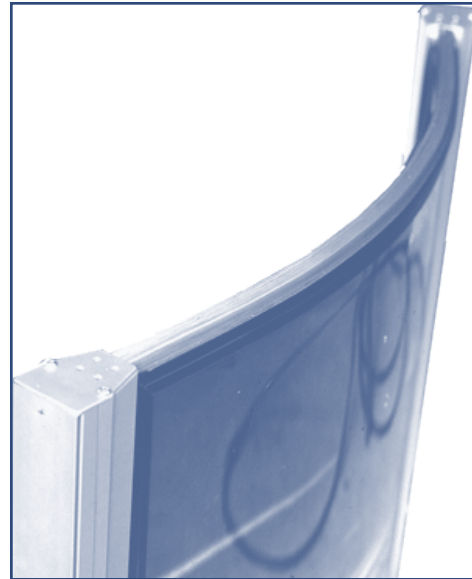


- ▶ SPECIFICATIONS
- ADVANTAGES
- APPLICATIONS

Specifications TechniOne Mag

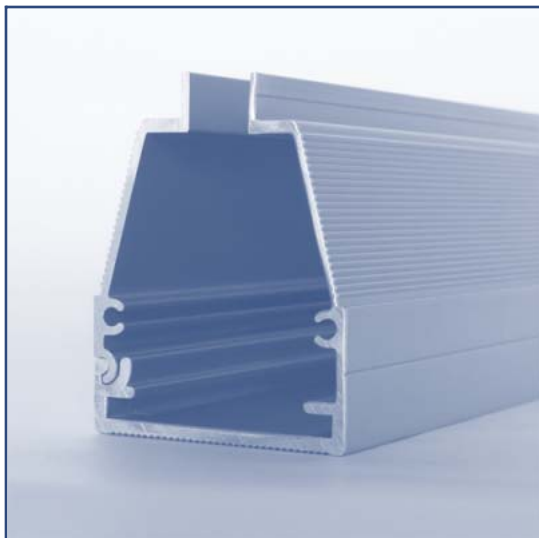
SPECIFICATIONS

Part	Description
frame	aluminum extrusion
vent	aluminum / plastic
face	acrylic PET "G" polycarbonate
back pan	white metal
venting	side or top
frame finish	anodized, black powder coated or custom colours
lighting	lit by T5 TechniLite fixture (or non-lit)
lamp colour	830K, 835K, 840K, 841K, 865K
voltage	120v, 220v, 277v or 347v
power in	hardwired or 3 wire plug
transition box	transition box - w/rocker switch



APPLICATIONS

- theatres, cinemas
- libraries, schools
- public spaces
- transit stations
- directories
- video stores
- Museums



ADVANTAGES

- Barrier free/ADA compliant
- cool running high frequency electronic ballast and T5 lamps
- self contained, easy lamp replacement
- changeable and affordable graphics
- hanging or wall mounted
- one or two sided
- five different frame formats available
- available in 120v or 220v.



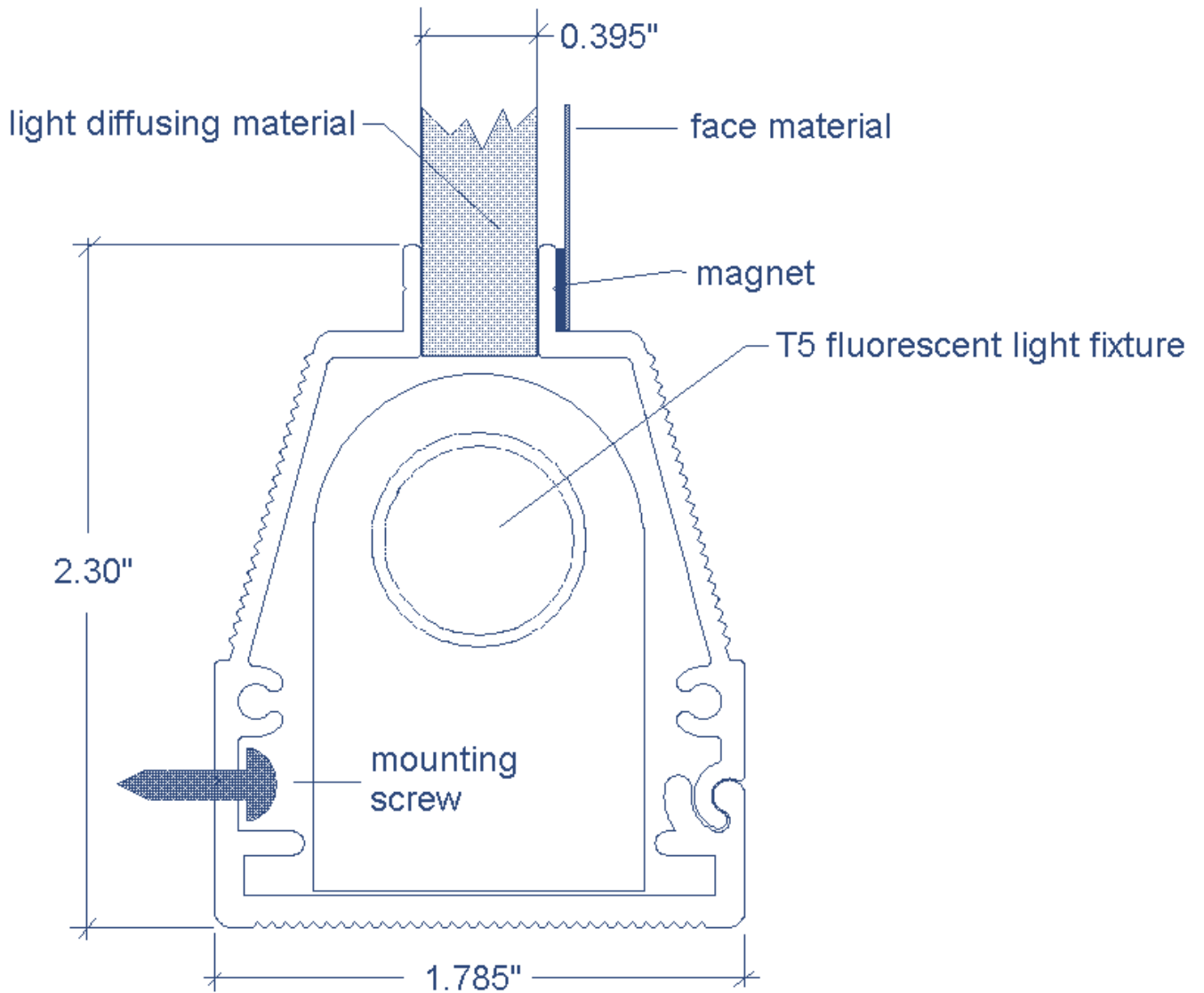
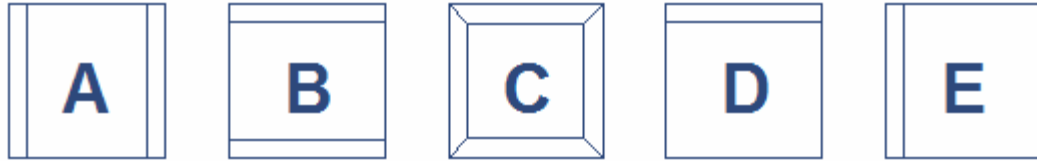
▶ CUT SHEET

Specifications

TechniOne Snap

CUT SHEET

The TechniOne Snap is available in five different frame formats:





► INSTALLATION INSTRUCTIONS
LAMP REPLACEMENT
PARTS AND SERVICE

Use and Care TechniOne Mag

INSTALLATION

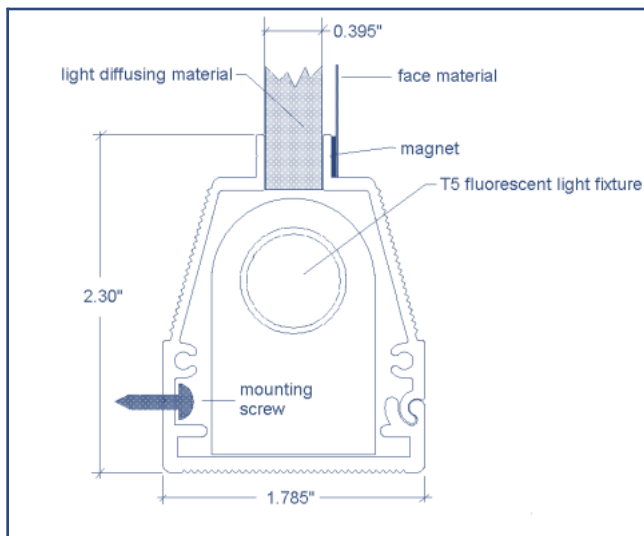
Tools required: drill, 3/16" bit, screwdriver

Wall Mounting

1. Remove the clear polycarbonate face material using the provided suction cup. Note the location of the #6 screws on each side. (*location will vary by sign*)
2. Remove the access covers: most installations require the removal of only two access covers, we recommend removing the top and bottom covers. The cover will rotate outward once the access screws are removed.
3. Drill a minimum 2 top and 2 bottom 3/16" pilot holes through the extrusion and affix sign accordingly as conditions warrant.
4. Once the sign is properly installed replace the access covers.

REMOVING A FIXTURE

1. Remove both the face material and graphic from the sign.
2. Locate the screw on the end cap of sign and remove.
3. Remove the section of sign frame by removing the visible screws of the frame assembly. For one lamp: remove three frame sections for two or more sections: remove all frame sections. This will expose the lamp and reflector assembly which may be removed.
4. Remove the lamp by turning the lamp in either direction. You will feel the lamp "unclick" at which point you can simply lift out the lamp from the sockets.
5. Remove the light fixture from the sign frame housing.
6. Detach cord(s) as necessary.
7. Install replacement unit ensuring correct male/female plug connection. Test lamp and fixture by turning it on.
8. Replace sign frame assembly and secure with screws. Replace the face material.



LAMP REPLACEMENT

1. Remove both the face material and graphic from the sign.
2. Locate the screw on the end cap of sign and remove.
3. Remove the section of sign frame by removing the visible screws of the frame assembly. For one lamp: remove three frame sections for two or more sections: remove all frame sections. This will expose the lamp and reflector assembly which may be removed.
4. Remove the lamp by turning the lamp in either direction. You will feel the lamp "click" at which point you can simply lift out the lamp from the sockets.
5. Insert a new lamp and lock into place by turning the lamp in the sockets. Test lamp and fixture by turning it on.
6. Replace sign frame assembly and secure with screws. Replace the face material.

CLEANING

Clean acrylic and light transferring materials with warm water and a soft cloth. **Do not use petroleum based or abrasive cleaners.**

PARTS AND SERVICE

We pride ourselves in our commitment to quality and reliability of all our products. Our TechniOne Mag signs are warranted to be free of defects in workmanship. Ballasts are replaced by changing out whole fixture. Replacement lamps are readily available and can be ordered directly from TechniLite Systems by calling 1.800.730.5853.

