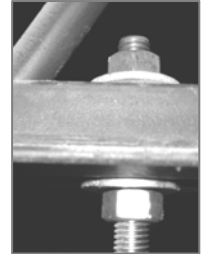


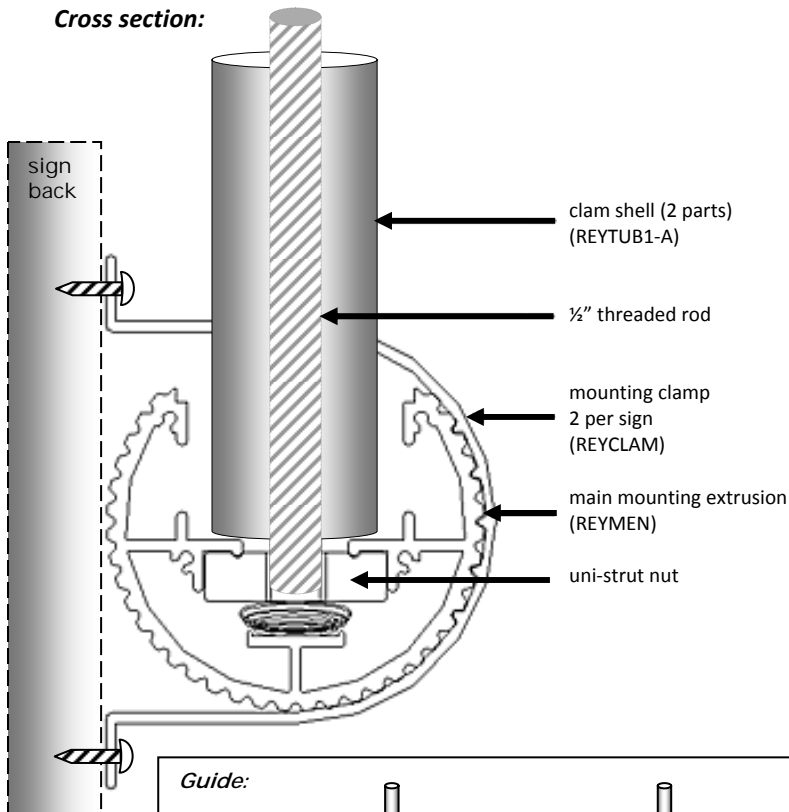
Tools required:

drill with 1/8 bit , #2 Phillips screwdriver, 3/4" crescent wrench, vise grips

1. Determine loading required per linear foot of mounting rail using the guide below.
2. Choose spacing as per guide and mounting availability on underside of deck or joists system and position uni-struts accordingly.
3. Determine height of mounting rail and cut 1/2" rod to accommodate.
4. Assemble mounting rail to back of sign using mounting clamps.
5. Insert threaded rod into uni-struts nuts in mounting rail.
6. Position, hang and level assembly to underside of deck or joist system.
7. Power supply should be positioned in mounting rail and tie wrapped to the threaded rod.
8. Snap the clam shell extrusion (REYTUB1-A) together over the threaded rod, after cutting to length.
9. Install the end caps using #2 Phillips screws (*provided*)
10. Install mounting brackets over the mounting rail and fasten to the back of sign on the frame edge, centred to height of sign.
11. Completely adjust angle prior to tightening.
12. Repeat as necessary, centring signs from left to right according to your specifications.



Cross section:



Guide:

